

# Boothe Memorial Park & Museum

FRIENDS OF BOOTHE  
SEPTEMBER 2025



## IN THIS ISSUE

### **Member Event – Dragone Auto Aces**

This Member's Only event was held on the evening of August 2<sup>nd</sup>. The 1905 Locomobile stole the show!

### **Shakespeare in the Park – Featuring 12<sup>th</sup> Night**

The Hudson Shakespeare Company was back at Boothe Park this summer.

### **Back to School Community Fair.**

Boothe introduces itself to school children and their families.

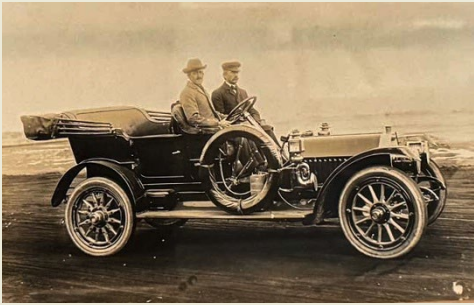
## Pumpkin Fest is fast approaching!

By Ann Minton

## Town of Stratford Pumpkin Fest

Like it or not, Fall is here. We may still have some fabulous weather as the leaves begin to fall, but we most definitely will have some fabulous events at Boothe Park. Our big event is The Pumpkin Festival scheduled this year on Saturday, October 18<sup>th</sup>. Rain date on Sunday the 19<sup>th</sup>.

Among the fun activities at the festival will be a Costume Parade for young and old alike, Pumpkin Carving Contest, a Magic Show, a Hayride, and fortune telling. The children will particularly enjoy face painting, glitter tattoos, and an inflatable maze. A falcon show will amaze everyone, along with performances by the high school drama club and dance team. Town Historian, David Wright will give a talk about "Forest to Shore" in the Visitor's Center, and the Roaming Railroad traverses the park with passengers all afternoon. Refreshments will be available and the historic Boothe buildings will be open for guided tours. Join us for a fun-filled day!



*The Boothe brothers and their 1910 Locomobile Model L touring car.*

The Boothe brothers owned a 1910 Locomobile Model L touring car, made in Bridgeport, Connecticut. They owned this car for over 5 years. This photo looks as though it was taken at Seaside Park in Bridgeport where the Locomobile factory was located.



*Alex Dragone, of Dragone Classic Motorcars, Orange, CT, brought their 1905 Locomobile to Boothe Park for a special Members Event on August 2<sup>nd</sup>.*

## Member Event – Alex’s Auto Aces

By Rod Jovanelly



This summer we had another member event - Free admission for members of the Friends of Boothe. This time we hosted Alex Dragone, one of our Executive Board members, who is an antique car expert. His family’s company, Dragone Classic Motorcars was recently featured in an Episode of “American Pickers” on The History Channel.

Alex brought the car featured in the show to Boothe Park - a 1905 Locomobile made in Bridgeport CT. It was an incredible piece of automotive history and probably the loudest automobile I have ever heard. There is only one other of these cars in existence today and that is at the Henry Ford Museum in Dearborn Michigan. After an outdoor discussion about the car, everyone moved into our Visitor Center to watch the episode of “American Pickers”.

A special thank you to Betty Powers for coming up with the idea for this event and making it happen. The Friends of Boothe gained 10 new members that evening! And of course, a thank you to Alex Dragone, and his father Manny, for sharing the fabulous Locomobile with the Friends of Boothe Park.

# Shakespeare in the Park



Shakespeare Theater performances were back at Boothe Park this summer thanks to Noelle Fair, the Managing Director of The Hudson Shakespeare Company. The performances of *Twelfth Night* were held on two separate weekends in July. All of the productions were very well attended, and we were blessed with perfect summer weather.

This was the second year in a row that we have had the pleasure of these outdoor performances. A new location was chosen for this story which featured our rose garden as the background. The story wrapped itself around the garden entrance and lovely rose bushes as backdrop. We look forward to seeing The Hudson Shakespeare Company back again next summer!



# Back to School Community Fair

The Friends of Boothe recently participated in Stratford's Back to School Community Fair which was held at Stratford High School. Rod Jovanelly and Peter Kostopolis were there to represent Boothe Park with our new Boothe Prize Wheel! They gave out hundreds of prizes and provided visitors with inviting information about Boothe. The Boothe Park Railway Society was also at the Back to School event with their fascinating train layout. The turnout at the event was terrific! There were hundreds of parents and children, many of whom had never heard about the Park that was donated to the Town by the Boothe brothers. We hope that many of the families we met will visit us this fall. Some of the students might come to the Park as part of our school program. While others might come with their family and friends to tour the buildings, and walk the grounds. Look for our Boothe prize wheel at our upcoming events, such as The Pumpkin Festival and the Holiday Open House!



Boothe volunteer, Pete Kostopolis and the new Boothe Prize Wheel at the Stratford Back to School Community Fair.

# Holiday at the Homestead - Coming in December!

Our Holiday at the Homestead event will be here before you know it so mark your calendars!  
Only one weekend this year!  
\*Fri Dec 5, 6:30-8:30  
\*Sat Dec 6, 1-4 and 6:30-8:30  
\*Sun Dec 7, 1-4 and 6:30-8:30  
\*Mon Dec 8, 6:30-8:30  
(Pick up for auction winners will be Tues Dec 9, 6:30-8pm)  
If you have been to the fully decorated Homestead during this holiday event, you know that there are many tabletop Christmas trees up for auction. We will be offering all the cleverly decorated trees once again. This year we are adding 18 decorated wreaths. We hope to see you for the holidays!

# Become a Member of the Friends of Boothe

The Friends of Boothe is a Non-Profit organization so we welcome all donations and memberships. Becoming a member provides you with a few special benefits each year, such as events for members only, or scheduling your own personal private tour at any time of year!  
Donation Options:  
Individual membership = \$20  
Family membership = \$30  
Business Contribution = \$50  
Donation = any amount

Go to our site:

<https://boothememorialpark.com>

- In the top row click: "Support Us"
- Click on: "Membership"
- Fill out the form on our secure site.
- Click "Submit" at the bottom of the screen.

A big "Thank You" goes to all of you who are already supporting us! And a big "Welcome!" to those who are joining this fun group!

# Trains at Twilight



*People driving by, stopped in at the sight of this Railway Society event.*

The Boothe Memorial Park Railway Society recently hosted an evening of excitement at their train museum. On Friday night, September 5<sup>th</sup>, hundreds of visitors came to view the outdoor trains as they whistled under bridges and through tunnels lit by subtle street lights on the life-like platform outside. Inside the Railway building, the trains chugged along through all the various settings, from floor to ceiling, whistling all the way. The trains were mesmerizing for the children, and captivated the adults as well.

Across the field from the trains were a few members of the Boothe Park Astronomical Society along with Mark Holden, President. They had several of their telescopes set up to allow visitors to view the orange full moon that evening.

The weather cooperated beautifully, and brought many visitors for yet another amazing event at Boothe Memorial Park.



*Inside view of the Train Museum*



*Close-up up of the outdoor scene.*

***Photos in this issue are courtesy of  
Rod Jovanelly - A Touch of Color***